



OUR LADY OF FATIMA
UNIVERSITY

ENROLL NOW!
ONLY P20,000
DOWN PAYMENT

No Entrance Exam for all
Baccalaureate Graduates



VERY GOOD



COLLEGE OF MEDICINE

COLLEGE OF MEDICINE

ACCREDITATIONS

- ISO 9001:2015 Certification
- Level I Accreditation by the Philippine Accrediting Association of Schools, Colleges and Universities (PAASCU) - Doctor of Medicine

DOCTOR OF MEDICINE

The College of Medicine is one of the flagship colleges of the Our Lady of Fatima University (OLFU). Since its inception in 1979, the college has continuously developed its way of teaching along with its acquisition of state-of-the-art learning resources and equipment to be able to provide the best quality education in the field of Medicine.

Understanding the wide diversity of its students' needs, OLFU's College of Medicine offers a variety of elective courses in the curriculum allowing students to extend their knowledge in special fields of interest.

INTERNATIONAL LINKAGES AND RECOGNITIONS

The College of Medicine is fully accredited by the New York State Education Department (NYSED), allowing its fourth-year students to render their clerkship in accredited training hospitals in New York; as well as in hospitals under the jurisdiction of the Illinois State Board of Education, the Thailand Medical Council, and the Maldives Medical Council.

OLFU stands out as the first and only Philippine medical school with an institution-to-institution Clerkship Training Program in collaboration with foreign hospitals. Over 100 medical students from OLFU have participated in clinical clerkship training at institutions such as the Peninsula Hospital Center in New York, Jackson Park Hospital in Chicago, and Harbor Hospital in Baltimore.

In addition, the College of Medicine is listed in the World Directory of Medical Schools (AVICENNA - formerly by WHO).

Medical students embark on a voyage of exploration and development at OLFU's College of Medicine. They are introduced to well-established international partners and robust interdisciplinary collaborations that bridge diverse medical traditions.

TOPNOTCHER RANKINGS in the Physician Licensure Examinations

- Year 1991 to 2012 | 11 1st Placers
- Year 1987 to 2022 | 128 Topnotchers

With 197 Board Topnotchers from different pre-medical programs as of March 2024

SCHOOL PERFORMANCE in the Physician Licensure Examinations

Year 2019 | Top 2 Performing School

LOCAL AFFILIATION

Member Institution - Association of Philippine Medical Colleges Foundation, Inc. (APMCFI)

CAREER OPPORTUNITIES

- Healthcare Provider
- Health Educator
- Researcher
- Health Advocate

Scholarships and Financial Aid Offerings

Interested students must apply at the Student Financial Services office which will then screen applicants and award the grant/aid to selected, qualified students.

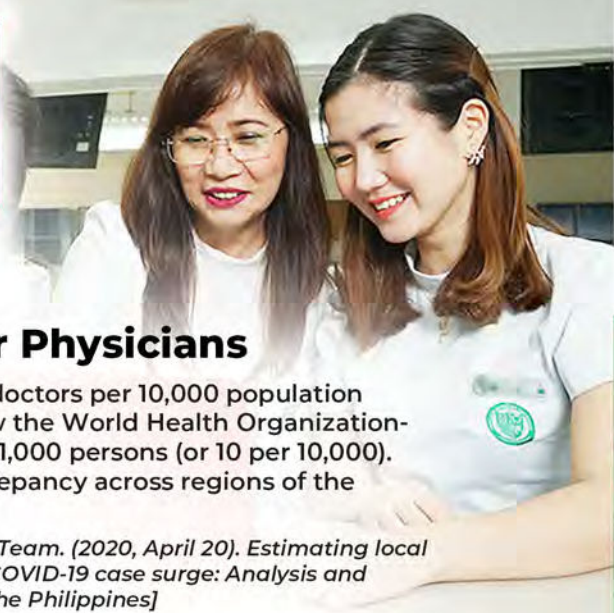
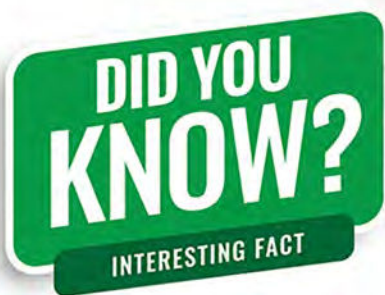
1. Leonora Juzgaya Olivares Foundation Grant.

This special scholarship grant is in honor of one of the university founders, Leonora Juzgaya Olivares. The grant is provided to qualified students who are financially challenged yet academically brilliant.

2. MD2 TO MD3 Scholarship. This grant is awarded to a medical student whose parent(s) are medical doctors.

For the complete list of scholarship offerings and their guidelines, please scan the QR Code on the last page.





Career Outlook for Physicians

There are, on the average, 3.7 doctors per 10,000 population in the Philippines. This is below the World Health Organization-prescribed ratio of 1 doctor for 1,000 persons (or 10 per 10,000). Moreover, there is a wide discrepancy across regions of the country.

UP COVID-19 Pandemic Response Team. (2020, April 20). Estimating local healthcare capacity to deal with COVID-19 case surge: Analysis and recommendations. [University of the Philippines]

The WHO estimates that at least 2.5 medical staff (physicians, nurses, and midwives) per 1,000 people are needed to provide adequate coverage with primary care interventions

World Health Organization. (2006). World health report 2006: Working together for health. Geneva, Switzerland

COLLEGE OF MEDICINE REGISTRAR

VALENZUELA CAMPUS

09171267026
(02) 8291-6538 loc. 406
registrar_medicine@fatima.edu.ph
jomarmito@fatima.edu.ph
mmpalmes@fatima.edu.ph

ADMISSION REQUIREMENTS

- Must be a holder of any Baccalaureate degree
- Original College Transcript of Records
- Certified True Copy of College Diploma
- NMAT (National Medical Admissions Test)
- Photocopy of Birth Certificate
- Letter of Recommendation
- 2 Copies of 2"x2" Picture
- Big Kraft Envelope (1pc)

SCAN FOR DETAILS

Scholarships and Financial Aid Offerings



<https://bit.ly/1-OLFUFinancialAids>

SCAN TO APPLY!



<https://bit.ly/OLFUApplicationForm>

SCAN TO KNOW MORE!

for enrollment process,
estimated school fees, and more



<https://bit.ly/01-OLFUGetInfo>